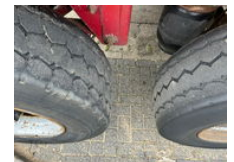
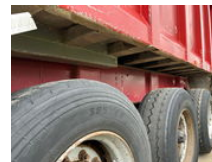
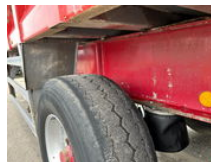




## OVA ALU TIPPER 40m3 mit holtz 47m3+SCHEIBE+BPW

### General features

Brand	OVA
Subcategory	Tipper
Construction year	2001
Date of first registration	30-08-2001
Color	red
Condition	Used
General condition	Good
Reference	OVA 40-47m3 01.



### Characteristics

Empty weight	5.960kg
Load capacity	33.040kg
Max. weight	39.000kg

OVA ALU TIPPER 40m<sup>3</sup> mit holtz 47m<sup>3</sup>+SCHEIBE+BPW

Accessories