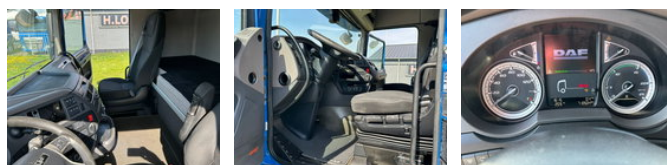


## DAF XF 106.450 SC 6x2 PARKCOOL+EURO 6 d+2 BET 710km

### General features

Brand	DAF
Model	XF 106.450
Subcategory	Heavy duty
Odometer reading	710.000km
Construction year	2019
Date of first registration	03-09-2019
Color	Blue
Condition	Used
General condition	Very good
Fuel	Diesel
Emission class	Euro 6
Reference	XF106 450 6x2 19 (15)



### Characteristics

Empty weight	7.920kg
GVW	23.900kg

# DAF XF 106.450 SC 6x2 PARKCOOL+EURO 6 d+2 BET 710km

## Technical specifications

Number of axes	3
Axis configuration	6x2
Transmission	Automatic
Engine output	450hp

## Accessories