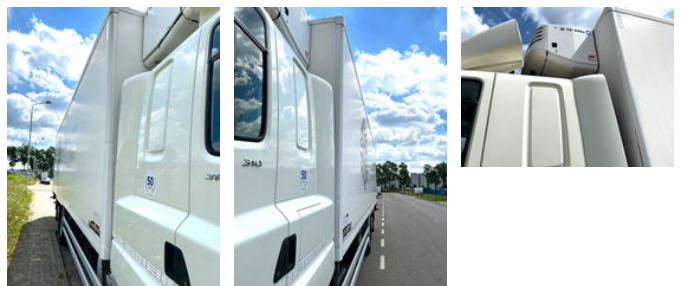




## DAF CF 310 6X2 LIFT+STEERING AXLE+THERMOKING TS-500e+TUV 2025+E6

### General features

Brand	DAF
Model	CF 310
Subcategory	Refrigerated
Odometer reading	927.000km
Construction year	2016
Date of first registration	15-03-2016
Color	white
Condition	Used
General condition	Very good
Fuel	Diesel
Emission class	Euro 6
Reference	CF310 16 6x2



### Characteristics

Empty weight	12.168kg
Load capacity	13.832kg
Max. weight	26.000kg

# DAF CF 310 6X2 LIFT+STEERING AXLE+THERMOKING TS-500e+TUV 2025+E6

## Technical specifications

assets

310kw

## Accessories